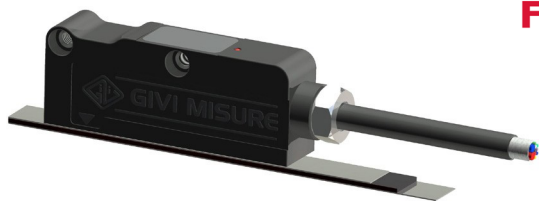


code **ST02** | project **A75** | release **B****FANUC****GENERAL FEATURES**

- Magnetic sensor with direct reading of the absolute position.
- FANUC  $\alpha$  serial interface.
- Resolution 1  $\mu\text{m}$  and measuring length up to 30000 mm.
- Contactless reading.
- Status indication through LED RGBW.
- Extremely easy and fast mounting of the sensor and application of the magnetic band, with wide alignment tolerances.
- Small size, to allow installation in narrow spaces.
- Axial or radial cable output.
- Magnetic band composed by a magnetized plastoferrite tape, with pole pitch 2+2 mm. The plastoferrite is supported by a stainless steel tape, already provided with the adhesive tape, for an easy application on the machine. To be used with magnetic band MP200A.

**Cod. AGM-2**

Pole pitch	2+2 mm
Serial interface	FANUC $\alpha$
Resolution absolute measure	1 $\mu\text{m}$
Accuracy grade	$\pm 10 \mu\text{m}^*$
Interpolation error (SDE)	$\pm 1.5 \mu\text{m}^{**}$
Unidirectional repeatability	$\pm 0.5 \mu\text{m}^{**}$
Hysteresis	2 $\mu\text{m}^{**}$
Measuring length ML	up to 30000 mm
Max. traversing speed	600 m/min
Vibration resistance (EN 60068-2-6)	200 m/s <sup>2</sup> [55 ÷ 2000 Hz]
Protection class (EN 60529)	IP 67
Operating temperature	-20 °C ÷ 75 °C
Storage temperature	-40 °C ÷ 80 °C
Relative humidity	100%
Power supply	5 Vdc $\pm 5\%$
Current consumption	200 mA <sub>MAX</sub> (with R = 120 $\Omega$ )
Electrical protections	inversion of polarity and short circuits
Weight	80 g

\* The declared accuracy grade of  $\pm X \mu\text{m}$  is referred to a measuring length of 1 m.

\*\* The error declared is subject to the respect of the alignment tolerances.

**MECHANICAL CHARACTERISTICS**

- Magnetic sensor with die-cast body.
- Possibility to fix the magnetic sensor with M4 screws or with through M3 screws.
- Wide alignment tolerances.
- Robust sealed cable exit.

**ELECTRICAL CHARACTERISTICS**

- Reading through positioning sensor based on magneto resistance, with AMR effect (Magnetic Anisotropy).
- Electrical protection against inversion of power supply polarity and short circuits on output ports.
- Serial protocol FANUC  $\alpha$ .
- CABLE:

- 6-wire shielded cable  $\varnothing = 6.2 \text{ mm}$ , PUR external sheath with low friction coefficient, resistant to oil and suitable for continuous movements.

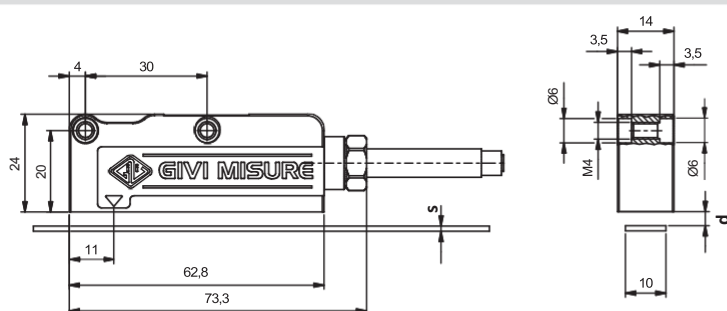
- Conductors section:  
power supply 0.35 mm<sup>2</sup>;  
signals 0.25 mm<sup>2</sup>.

**The cable's bending radius should not be lower than 70 mm.**

- Cable length 1 m with M12 connector. With cable extension, the maximum length can be extended to 30 m.

code **ST02** | project **A75** | release **B**

## DIMENSIONS

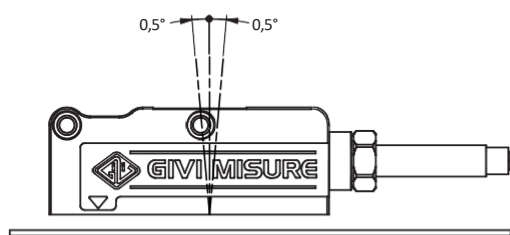


	MP200A	MP200A + CV103	MP200A + SP202
s (mm)	1.3	1.6	2.1
d (mm)	0.4 ÷ 1	0.7 <sub>MAX</sub>	0.2 <sub>MAX</sub>

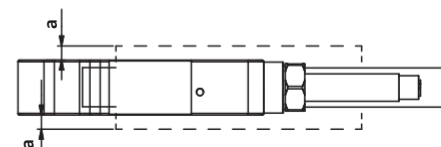
s = thickness without double-sided tape. Thickness with double-sided tape + 0.1 mm.

d = distance to be maintained between sensor and surface of the magnetic band (or eventual cover/support).

## ALIGNMENT TOLERANCES



**WARNING:** Respect the maximum distance between the sensor and the magnetic band.

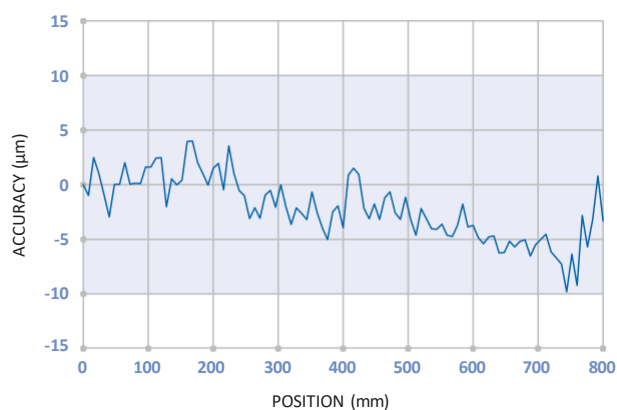


	AGM-2
a (mm)	0.5 <sub>MAX</sub>

a = alignment tolerance

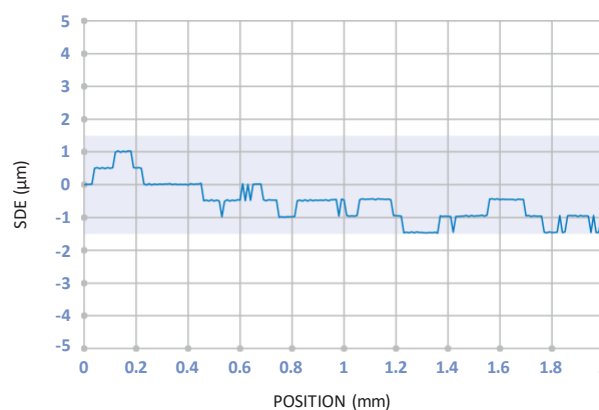
The following graphs show tests carried out in a metrological room under controlled climatic conditions: T= 20 °C ± 0.1 °C and R.H.= 45 ÷ 55%. The reference system for the comparison of position measurements is interferometric with 1 nm resolution and equipped with an environmental compensation device. The sensor is installed according to the recommended mechanical configuration at a distance of 0.5 mm from the magnetic band.

## ACCURACY



Accuracy graph: deviation between the value measured by the sensor and the value measured by the reference system.

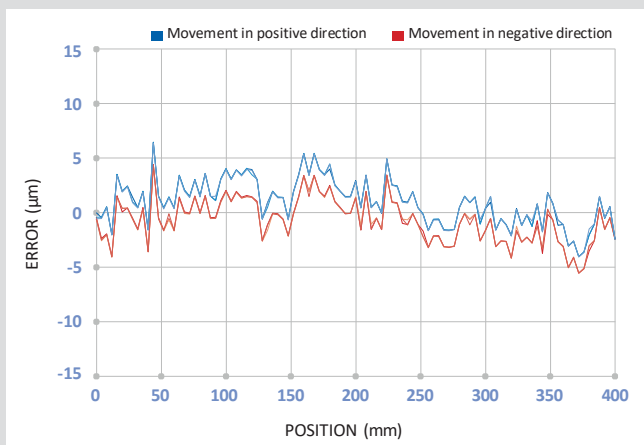
## INTERPOLATION - SDE



SDE (sub-division error) graph: accuracy of the interpolation device within the single pole pitch.

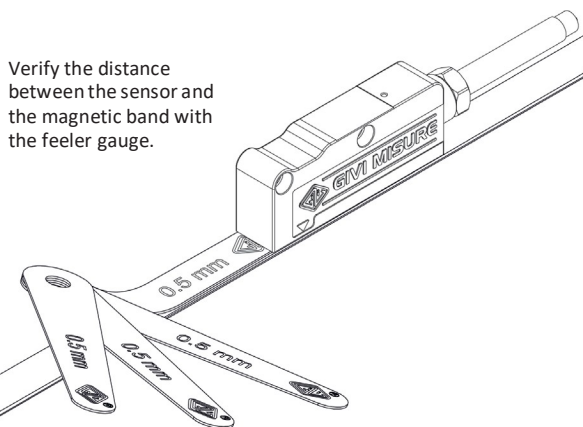
code **ST02** | project **A75** | release **B**

**REPEATABILITY**



Repeatability graph obtained by carrying out the measurements several times in both directions of advancement.

- Unidirectional repeatability: measurement error detected without inverting the movement direction of the sensor.
- Hysteresis: difference in the measure due to the inversion of the sensor movement direction.



Verify the distance between the sensor and the magnetic band with the feeler gauge.

**WARNING!**

Make sure the tools used for assembly are rigorously demagnetized.  
DO NOT TOUCH the cable terminals (or connector contacts) to avoid electrostatic discharges (ESD) on the device.



**ORDERING CODE**

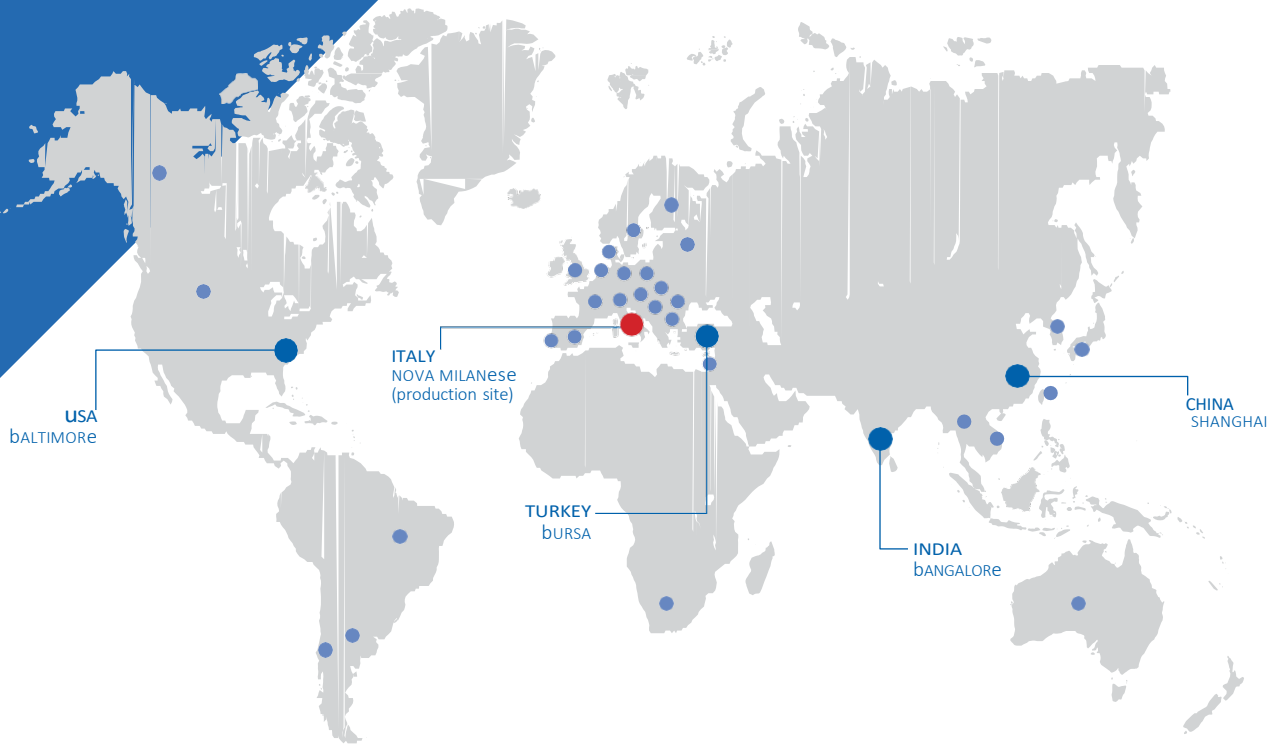
Example MAGNETIC SENSOR **AGM-2 M1A V F1 M01/S CZ4**

Model	Pole pitch	Resolution	Cable output	Power supply	Output signals	Cable length, cable type	Connector, wiring
AGM-2	M = 2+2 mm	1 = 1 µm	A = axial R = radial	V = 5 Vdc	F1 = FANUC $\alpha$	M01 = 1 m S = PUR cable	CZ4

Without prior notice, the products may be subject to modifications that the Manufacturer reserves to introduce as deemed necessary for their improvement.

### WORLDWIDE BRANCHES AND SERVICE CENTERS

Our branches in China, India, Turkey and USA are completely independent in providing a before and after sales service and a fast and qualified technical assistance.



### DISTRIBUTORS AND SERVICE CENTERS AROUND THE WORLD

- ARGENTINA
- AUSTRALIA
- BRAZIL
- BULGARIA
- CANADA
- CHILE
- CHINA
- CZECH REPUBLIC
- DENMARK
- FINLAND
- FRANCE
- GERMANY
- GREAT BRITAIN
- HUNGARY
- INDIA
- ISRAEL
- ITALY
- JAPAN
- MALAYSIA
- NEW ZEALAND
- POLAND
- PORTUGAL
- ROMANIA
- SLOVAKIA
- SOUTH AFRICA
- SOUTH KOREA
- SPAIN
- SWEDEN
- SWITZERLAND
- TAIWAN
- THAILAND
- THE NETHERLANDS
- TURKEY
- USA
- VIETNAM



Linear encoders



Magnetic systems



Rotary encoders



Digital readouts



Position controllers



Megatron AG – Gewerbehaus Ergolz, Wölferstrasse 5 4414 Füllinsdorf  
 Telefon: +41 (0)55 617 00 88  
 E-Mail: [sales@megatron.ch](mailto:sales@megatron.ch)  
[www.megatron.ch](http://www.megatron.ch)

#### Applications

- CNC machines
- Press brakes
- Traditional machines
- Automation
- Wood, glass and marble processing machines
- Renewable energies
- Special applications